

- | Who we are
- | What we do
  - Sectors we specialise in
- | Careers
- | Contact us

**Our working methodology is founded on a range of core skills which we adapt to each challenge. We have no off-the-shelf solutions.**

## Methodology



### News

[Jack Straw hosts Parliamentary Pathfinder event](#)

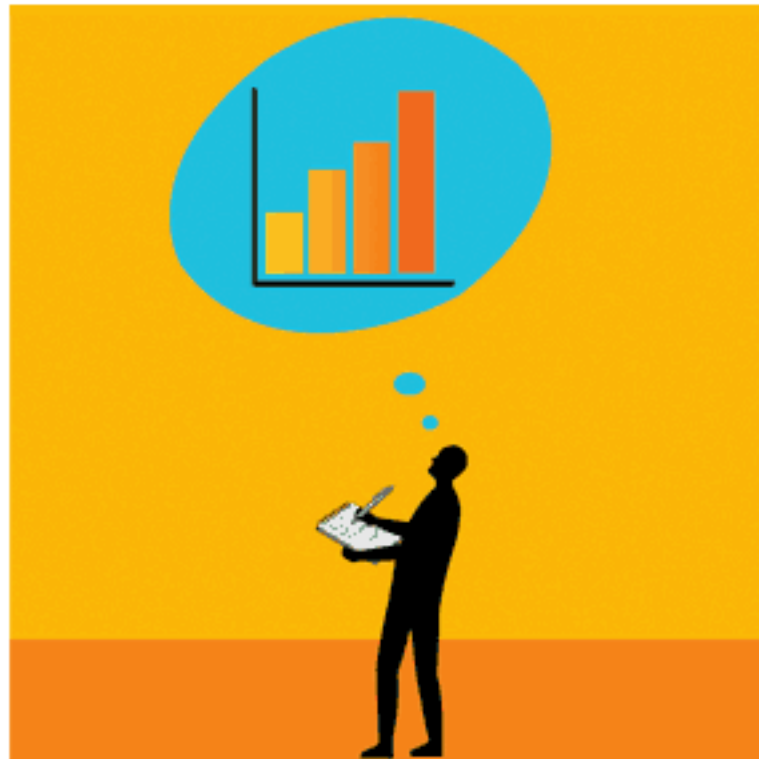
[Low carbon mission extended](#)

### Client member login

Username:

Password:

LOGIN



### Evaluation

Clients are offered three routes: a standard in-house media evaluation model, the creation of a specific model to match requirements or the use of external evaluation services that can be accessed by clients directly.

[< Back](#)

